

# Product Information

## Virtuoso Tall Tube Chimes with Alu Posts

BS EN 1176 - Designed to British & European Standards

### MATERIALS

**Panels** - Two Colour High Density Polyethylene (HDPE)

**Post** - Extruded aluminium post with powder coat finish

**Chimes** - Anodised aluminium with a brushed finish

### SUPPLY METHOD

**Panel** - Assembled

**Posts** - T-slot stops & post caps

**Beaters** - Assembled

### FEATURES



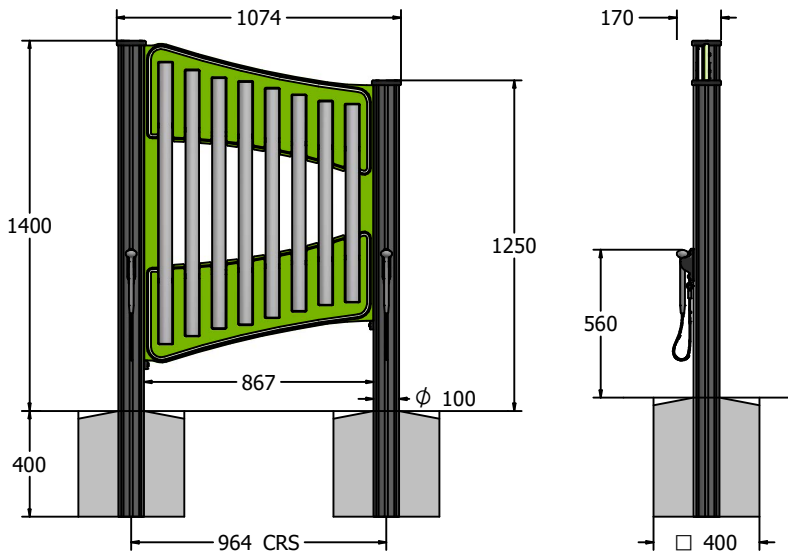
**INCLUSIVE** - Chimes positioned at easily accessible height



**MUSICAL** - Set of 8 musically tuned chimes



### DIMENSIONS



### TECHNICAL

**Age Range:** 2+ Years  
**Largest Part:** Chime Panel Assembly 1200 x 880 x 50mm  
**Heaviest Part:** Chime Panel Assembly 24kg Approx.  
**Total Weight:** 39kg Approx.  
**Surfacing:** N/A