

Product Information

Virtuoso Chime Tree with Alu Posts

BS EN 1176 - Designed to British & European Standards

MATERIALS

Panels - Two Colour High Density Polyethylene (HDPE)

Post - Extruded aluminium post with powder coat finish

Chimes - Anodised aluminium with a brushed finish

SUPPLY METHOD

Panel - Partially assembled

Beaters - Assembled

Post - Supplied separately

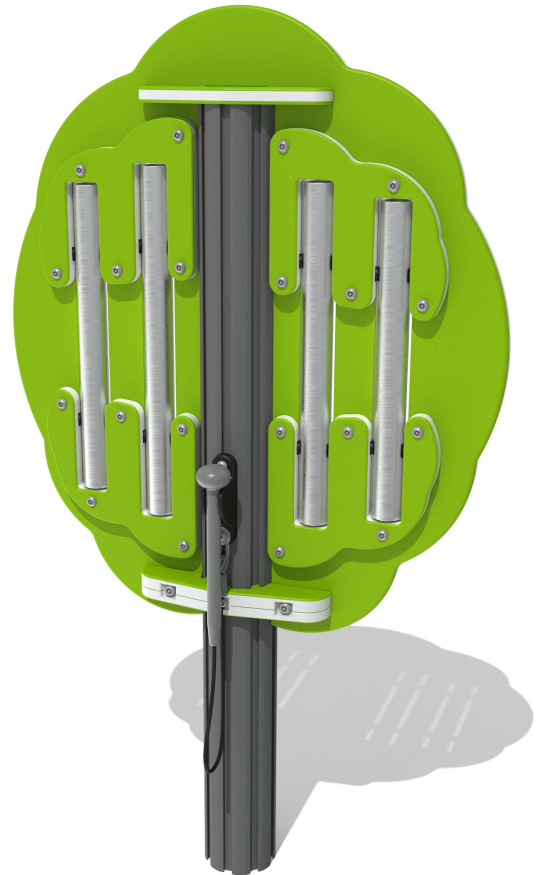
FEATURES



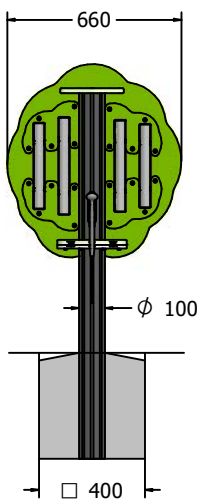
INCLUSIVE - Chimes positioned at easily accessible height



MUSICAL - Set of 4 musically tuned chimes

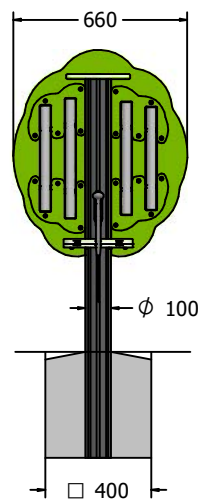
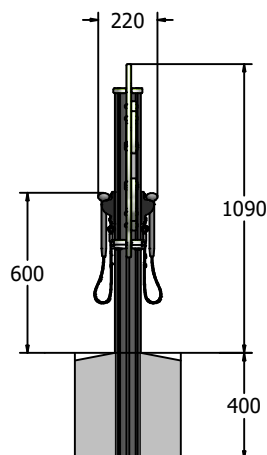


DIMENSIONS



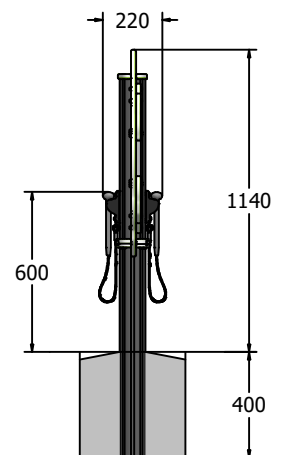
High Notes

FIVCTHI-AL-WP



Low Notes

FIVCTLW-AL-WP



TECHNICAL

Age Range: 2+ Years
Largest Part: Complete Assembly 1490 x 660 x 210mm
Total Weight: 15.4kg Approx.
Surfacing: N/A

TECHNICAL

Age Range: 2+ Years
Largest Part: Complete Assembly 1540 x 660 x 210mm
Total Weight: 16.2kg Approx.
Surfacing: N/A